



Enterprise IP Solutions

OfficeServ

OfficeServ EasySet User Manual

Every effort has been made to eliminate errors and ambiguities in the information contained in this guide. Any questions concerning information presented here should be directed to SAMSUNG TELECOMMUNICATIONS AMERICA, 1301 E. Lookout Dr. Richardson, TX. 75082 telephone (972) 761-7300. SAMSUNG TELECOMMUNICATIONS AMERICA disclaims all liabilities for damages arising from the erroneous interpretation or use of information presented in this guide.

Samsung Telecommunications

Publication Information

SAMSUNG TELECOMMUNICATIONS AMERICA reserves the right without prior notice to revise information in this publication for any reason. SAMSUNG TELECOMMUNICATIONS AMERICA also reserves the right without prior notice to make changes in design or components of equipment as engineering and manufacturing may warrant.

Copyright 2005

Samsung Telecommunications America

All rights reserved. No part of this manual may be reproduced in any form or by any means—graphic, electronic or mechanical, including recording, taping, photocopying or information retrieval systems—without express written permission of the publisher of this material.

PRINTED IN USA

Table of Contents

Chapter 1 – Introduction.....	1
Overview of OfficeServ EasySet	1
Chapter 2 – Installation of OfficeServ EasySet	2
Installation Environment.....	2
Installation of OfficeServ EasySet	3
Installation of the Web Service Program (IIS)	3
Installation of OfficeServ EasySet	4
For Installations with Windows XP and the NTFS File System	7
OfficeServ EasySet Environment Settings	9
Setting the Environment for OfficeServ Link.....	9
Setting the Environment for OfficeServ EasySet.....	9
Starting OfficeServ EasySet.....	11
Chapter 3 – Using OfficeServ EasySet.....	12
Logging into OfficeServ EasySet.....	12
Using the OfficeServ EasySet	15
Station Lock.....	15
Password.....	15
Call Forward	16
Station Name.....	17
Speed Dial	17
Date Display	18
PGM Message.....	18
Alarm Reminder	19
Send MSG	19
Answer Mode	21
Station On/Off.....	22
Volume	23
Text Messaging	24
Conference Groups	25
Caller ID	25

LCD Display	26
Language	26
Exec State	27
Schedule	27
Wallboard	28
Call Accounts	29
User Key Assignment	29
Software License Agreement and Limited Warranty	31

Chapter 1

Introduction

Overview of OfficeServ EasySet

OfficeServ EasySet is a web enabled management tool designed to give iDCS or OfficeServ key telephone users a simple and friendly way to configure the features and button assignments of their Samsung iDCS digital or IP keyset

The application itself resides on an IIS web server, which in turn is connected to the iDCS or OfficeServ key telephone system via the OfficeServ Link.

OfficeServ EasySet allows a user to customize the features and operation of their digital or IP keyset using Microsoft Internet Explorer. Many of the configurable options available include:

- Change name, password and lock status
- Set call forwards and speed dial numbers
- Change volume settings
- Change time and date display format
- Create and save a personal time schedule
- Set alarm calls and absent messages
- Review local call logs
- Change phone answer options
- Send short messages to other users

Chapter 2

Installation of OfficeServ EasySet

Installation Environment

The OfficeServ Link application must be installed and configured before installing EasySet. (See the separate OfficeServ Link Manual)

OfficeServ EasySet may be installed on the same PC as the OfficeServ Link, or another PC communicating with OfficeServ Link. However, the PC used must be dedicated for OfficeServ CTI applications. The OfficeServ EasySet software then provides information to the 'clients' via a web server (Microsoft IIS) on the OfficeServ EasySet PC and Windows Internet Explorer Web browser on the 'client' PCs.

OfficeServ EasySet must be installed on a PC that has an operating system of Microsoft Windows 2000 Professional or later, and with IIS Web Service Installed.

To install and operate the OfficeServ EasySet, the minimum requirement specifications for the system are given below:

- Microsoft Windows 2000 (Service Pack 2 or higher) , Windows XP (Service Pack 1 or higher) operating system software
- Pentium 4 1.6 GHz (or higher) microprocessor
- 512 MB (or higher) RAM
- 20 GB (or larger) hard disk drive
- CD-ROM
- 10/100 Network Interface Card (NIC)
- Standard VGA monitor, keyboard, and mouse
- TCP/IP configuration

Installation of OfficeServ EasySet

The installation procedures for OfficeServ EasySet are as follows:

1. Installation of the Web Service Program (IIS)
2. Installation of the OfficeServ EasySet
3. If the OS for the OfficeServ EasySet server is MS Windows XP and the file system has been formatted as NTFS, some security options will have to be changed.

Installation of the Web Service Program (IIS)

The installation procedures for the Web Service Program (IIS) are as follows:

The IIS setup program is included on the Windows Operating System CD.

1. In the taskbar, click [Start] > [Settings] > [Control Panel].
Select the [Add/Remove Programs] icon.
2. From the add/remove Programs window, click the [Add/Remove Windows Components] button in the left-hand frame of the window. Then the Windows Components Wizard window will be displayed. After selecting the 'Internet Information Server (IIS)', click the [Next] button.



Windows Components

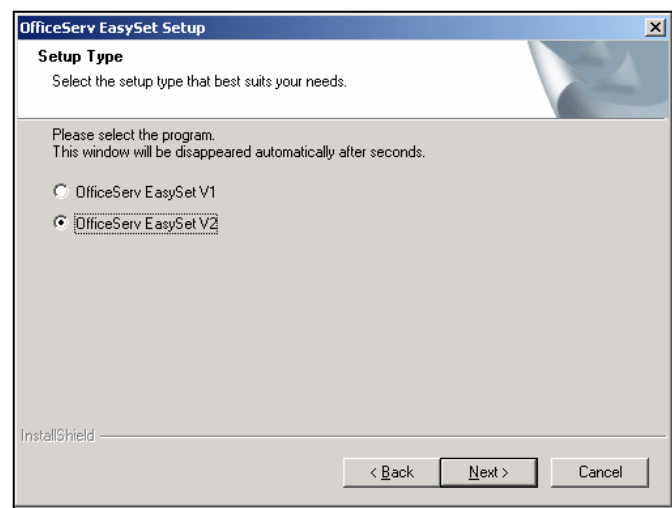
3. If an 'Insert Disk' message appears during the installation, insert the Windows CD and click [OK]. Then click the [Browse] button and select the 'i386' folder.
4. The installation will proceed as the program files are copied to the system. Click the [Finish] button when the installation has completed.

Installation of OfficeServ EasySet

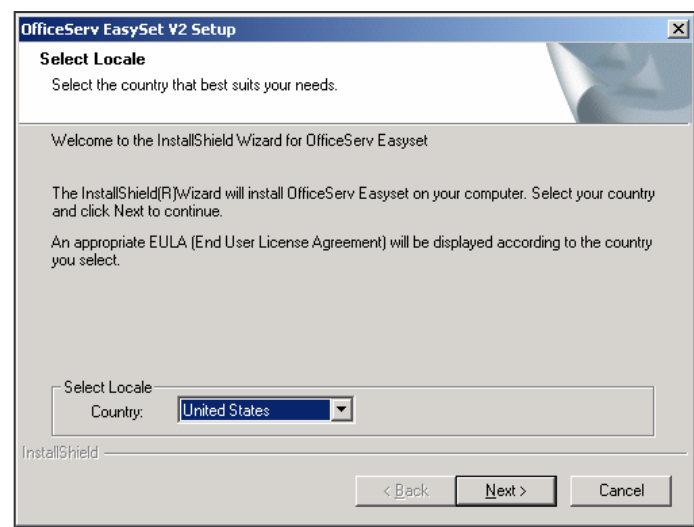
After installing windows IIS you are now ready to install the OfficeServ EasySet application.

Install the OfficeServ EasySet by following the steps as shown below:

1. Insert the OfficeServ CTI Applications CD and choose the OfficeServ EasySet installation from the software install section.
2. When the window as shown below is activated, select a program.
 - For iDCS 500 Release 2, iDCS 100 Release 2, and OfficeServ 7000 Series systems select [OfficeServ EasySet V2].
 - And click the [Next] button.

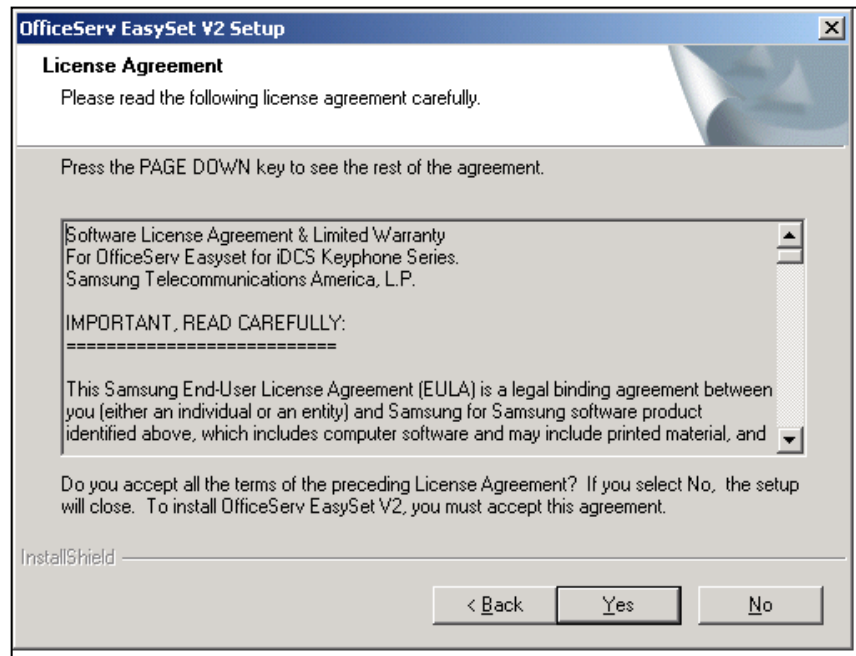


3. When the window as shown below is displayed, select the country and click Next to continue. An appropriate End User License Agreement will be displayed according to the country selected.



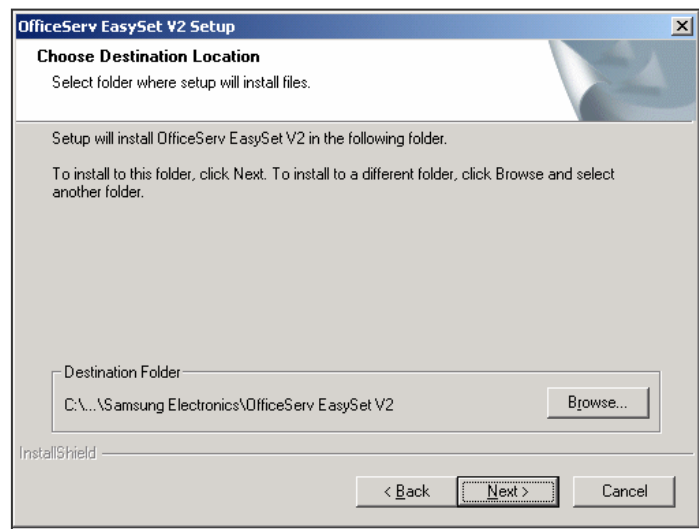
InstallShield Wizard

4. When the window as shown below is activated, click the [Yes] button to accept the Licence Agreement conditions.



License Agreement

5. When the window as shown below is activated, click the [Next] button to accept the default location for the program folder.



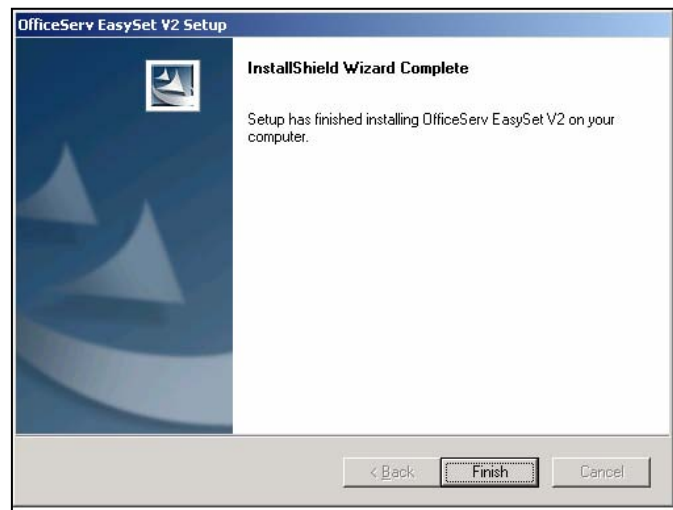
Choose Destination Location

6. After the installation of OfficeServ EasySet, the EasySet web login URL address will be indicated by the following information screen.



SetupVirtualDIR

7. Click the [Finish] button, when the installation has completed as shown below.

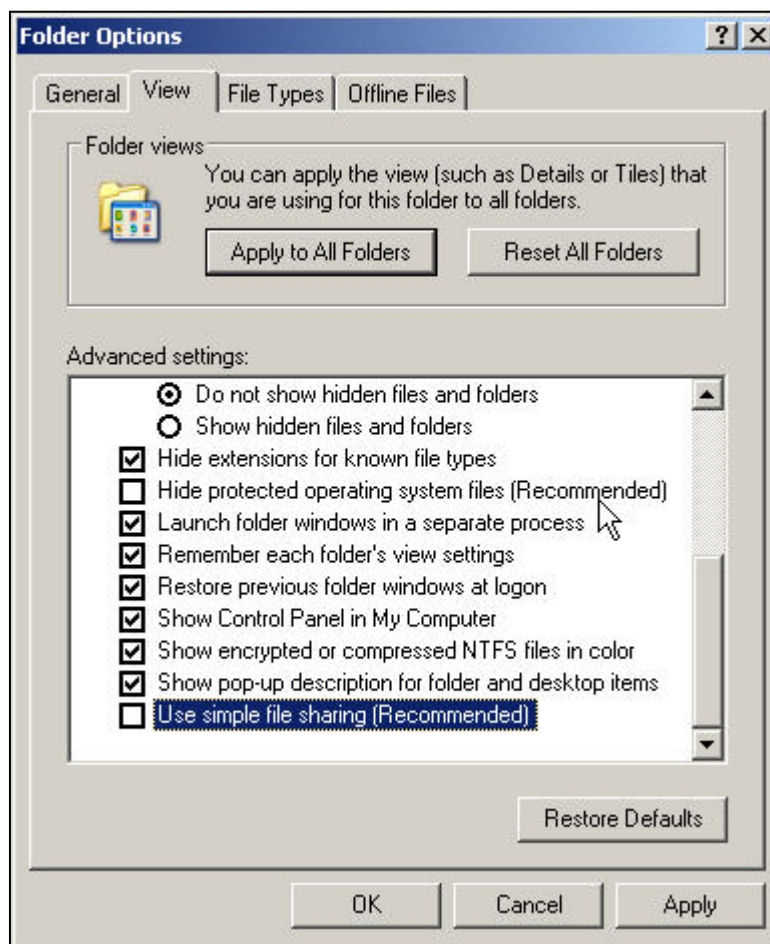


For Installations with Windows XP and the NTFS File System

If the Operating System of the OfficeServ EasySet server is MS Windows XP and the file system is NTFS, some security options have to be changed as shown below:

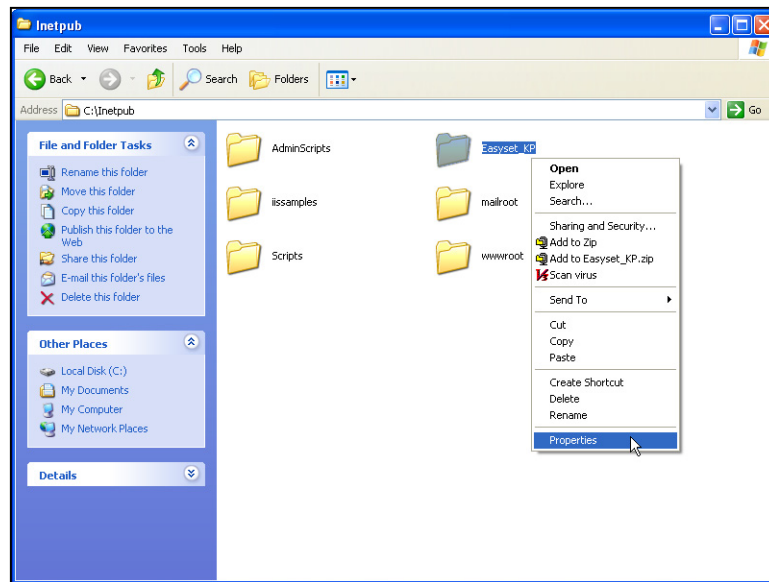
1. Login to the PC using an Administrator ID, allowing full access rights.
2. Open Windows Explorer and select [Tools] from the menu bar, then select [Folder Options].

In the [View] tab, remove the check in the checkbox for the [Use simple file sharing (Recommended)].

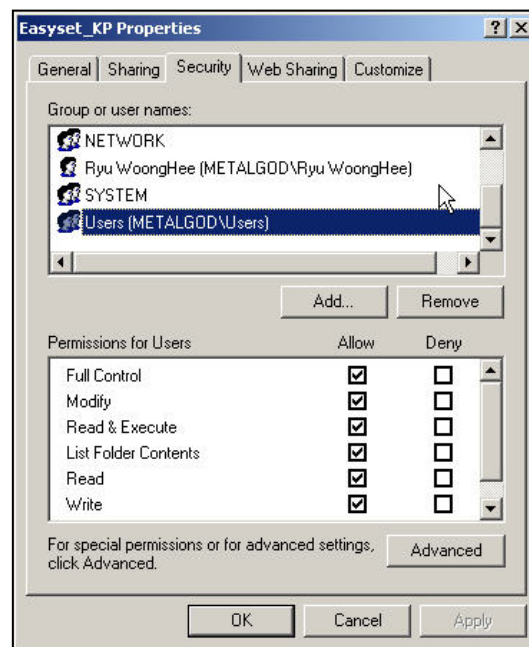


Folder Options

3. From Windows Explorer open the c:\inetpub folder, right click on the EasySet_KP folder and click the [properties] settings



4. In the [Security] tab, allow Users to 'Write' and 'Modify' as in the example below:



Easyset_KP Properties

5. Then restart the IIS Server from the Command Prompt or restart the PC.

```
F:\>iisreset  
  
Attempting stop  
Internet services successfully stopped  
Attempting start  
Internet services successfully restarted  
  
F:\>
```

OfficeServ EasySet Environment Settings

This section discusses how to start OfficeServ EasySet

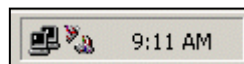
Setting the Environment for OfficeServ Link

To start the OfficeServ EasySet application, OfficeServ Link must first be installed and running.

Setting the Environment for OfficeServ EasySet

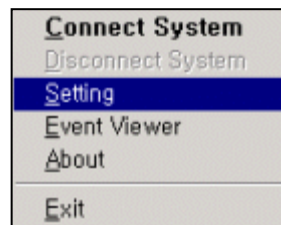
The environment setup procedures for OfficeServ EasySet are set as follows:

1. Launch the OfficeServ EasySet by double clicking the EasySet icon on the desktop.
2. To set the IP Address of the PC running OfficeServ Link, click the right-hand mouse button on the Tray Icon as shown below.



The OfficeServ EasySet Tray Icon

3. Select [Setting] from the drop-down menu.



Select [Setting]

- Set the required IP address in the Setting Panel. This is the IP address of the PC running the OfficeServ Link application. The default ports should be retained unless there is a compelling reason to alter them.

Packet Deliverer - Setting

Web Server

Listening Port: 5004

OfficeServ Link

IP Address: 127.0.0.1

Data Port: 6000 ☒

SMDR Port: 6002 ☒

SMDR Setting

Select Country: U.S.A.

Save Cancel Exit

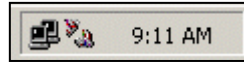
Packet Deliverer-Setting

Frame	Item	Description
Web Server	Listening Port	Listening Port No. is used for connecting with the Web Server (See OfficeServ Link→Configuration Button→Listen Port No for Client Connections to verify)
OfficeServ Link	IP Address	IP Address of the OfficeServ Link
	Data Port	Listen Port No of the OfficeServ Link
	SMDR Port	SMDR Port No of the OfficeServ Link (See OfficeServ Link→Option Button→Message Monitor/Save Option→Use SMDR/UCD Msg Monitor→Port No. to verify)
SMDR Setting	Select Country	Select your Country for the SMDR

- Click [Save] then [Exit] to save the setting and exiting.

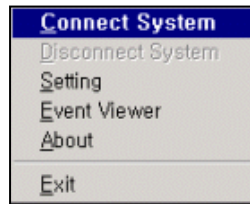
Starting OfficeServ EasySet

1. Double click the EasySet icon on the desktop and then the EasySet Tray Icon is created as shown below.



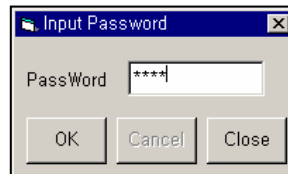
The OfficeServ EasySet Tray Icon

2. Click the right-hand button of the mouse on the tray icon and select the [Connect System] option.



Connect System

3. Input the password and click the [OK] button.



Input Password



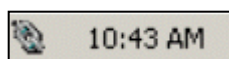
NOTE

OfficeServ EasySet Password

The password for OfficeServ EasySet is the “EasySet Option” password as set in the MMC 841 of the iDCS Release 2 or OfficeServ 7000 Series systems. The default password is 1234.

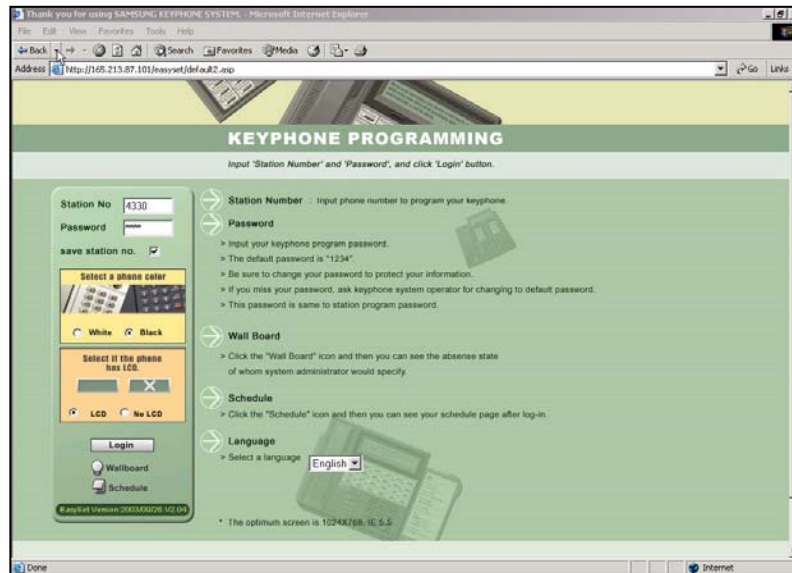
The EasySet option password is not available on the iDCS 100 or 500 Release 1 systems and the connect system password box will not be displayed when EasySet V1 is used.

4. If the Tray Icon is displayed as shown below (with joined chain links), then the OfficeServ EasySet service has started successfully.



The OfficeServ EasySet Tray Icon_ joined chain links

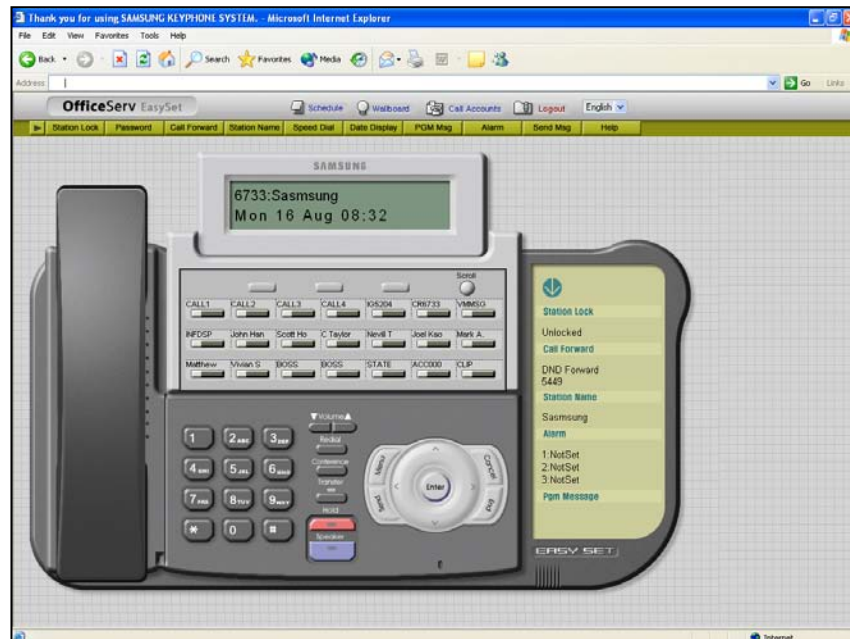
- Select the required language via the dropdown box and press the [Go!] button. The login page will be activated as below:




- Enter your Station Number and your password (default is 1234). Select the parameters relating to your phone-color, LCD or no LCD, and then click on the [Login] button.

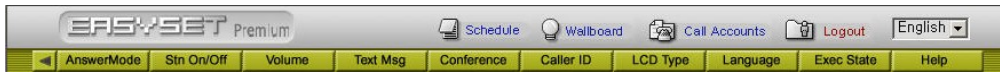
Note: ITP Phones will automatically be set to the last device type that was logged in using that Station ID.

- The following main page will be displayed. The type of Keyset in the browser panel will correspond to the Keyset used at your station.



Main Page

Click the  button then the following additional menus will be displayed.



Using the OfficeServ EasySet

Station Lock



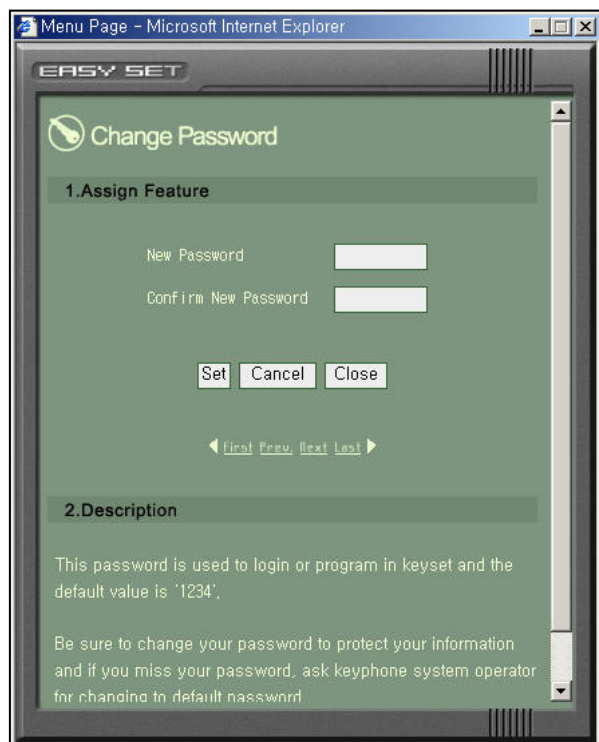
This feature allows you to lock your station against unauthorized use. The three options are as follows:

UNLOCKED: Unlocks a locked station.

LOCKED OUTGOING: The keyset cannot make calls outside the system. It can however make and receive intercom calls and receive incoming C.O. calls. When in this mode the HOLD key of a DCS or ITP keyset will flash slow RED.

LOCKED ALL CALLS: The keyset cannot make or receive any calls. When in this mode the HOLD key of a DCS or ITP keyset will light steady RED.

Password



Your station password is used to login to the OfficeServ EasySet and change the various program settings for your station. The default value is '1234'. Be sure to change your password to protect your program settings. If you forget your password, ask your System Administrator to reset your password to the default password.

Call Forward

Call Forward Type	Tel No
<input checked="" type="radio"/> Forward Cancel	
Call forward is not to be activated or canceled.	
<input type="radio"/> All Call Forward	
All call is forwarded.	
<input type="radio"/> Busy Forward	
When you are talking over the telephone, a new call is forwarded.	
<input type="radio"/> No Answer Forward	
When you are not answer, the call is forwarded.	
<input type="radio"/> Busy/NoAnswer Forward	
When you are talking over the telephone or not answer, the call is forwarded.	
<input type="radio"/> Do Not Disturb Forward	
While your keyset is set to DND state, the call is	

This feature allows you to redirect (forward) incoming calls. The calls can be redirected to the attendant, a station group, voice mail, external number or another station user

Forward Cancel : This option will cancel any call forwarding set.

All Call Forward: This option, when set, will forward all calls to the programmed destination. If the programmed destination is a station then that station can call the forwarded station to put calls through.

Busy Forward: This option, when set, will forward calls to the programmed destination when the forwarded keyset is busy.

No Answer Forward: This option, when set, will forward calls to the programmed destination if the forwarded station does not answer a call before the forward no answer timer in MMC 502 expires.

Busy/No Answer Forward: This option will activate both the BUSY option and the NO ANSWER option at the same time.

Do Not Disturb Forward: This option will forward all calls to the programmed destination whenever the forwarded station goes into DND.

Station Name

The screenshot shows a web browser window titled 'Menu Page - Microsoft Internet Explorer'. The page is titled 'EASY SET' and 'Station Name'. It has a green background. Under the heading '1. Assign Feature', there is a text input field labeled 'Name'. Below the field are three buttons: 'Set', 'Cancel', and 'Close'. At the bottom of this section are navigation links: '< First Prev Next Last >'. Below this is a section titled '2. Description' which contains the text: 'This allows user to enter an 11-character name to identify and it is displayed to the other party.' and 'The maximum length is 11-digits in English(5-digits in Korean).'

This allows you to enter an 11-character string name for display to an internal party calling from an LCD station.

Speed Dial

The screenshot shows a web browser window titled 'Menu Page - Microsoft Internet Explorer'. The page is titled 'EASY SET' and 'Speed Dial'. It has a green background. Under the heading '1. Assign Feature', there is a table with two columns: 'Speed Name' and 'Tel No'. The table has 10 rows, numbered 0 to 9. Each row has two input fields. At the bottom of the table are three buttons: 'Set', 'Cancel', and 'Close'.

	Speed Name	Tel No
0	<input type="text"/>	<input type="text"/>
1	<input type="text"/>	<input type="text"/>
2	<input type="text"/>	<input type="text"/>
3	<input type="text"/>	<input type="text"/>
4	<input type="text"/>	<input type="text"/>
5	<input type="text"/>	<input type="text"/>
6	<input type="text"/>	<input type="text"/>
7	<input type="text"/>	<input type="text"/>
8	<input type="text"/>	<input type="text"/>
9	<input type="text"/>	<input type="text"/>

This allows you to program personal speed dial locations for your station.

Each station may have up to 50 locations (or bins) assigned to it - these speed dial bins are numbered 0~49.

Each speed dial number consists of a trunk or trunk group access code and up to 24 digits to be dialed. These dialed digits may consist of 0~9, * and #.

You can also program an 11 character string name for each speed dial number.

Date Display

Menu Page - Microsoft Internet Explorer

EASY SET

Date Display

1. Assign Feature

Date	<input type="radio"/> Oriental	<input checked="" type="radio"/> Western
Time	<input type="radio"/> 12 Hour	<input checked="" type="radio"/> 24 Hour
Display	<input type="radio"/> Upper case	<input checked="" type="radio"/> Lower case

◀ First Prev Next Last ▶

2. Description

This allows user to select the date and time display mode on station LCD.

Date has two options: Oriental(MM/DD DAY HH:MM) and Western(DAY DD MON HH:MM)

This allows you to select the date and time display mode on your telephones LCD.

There are two option formats for the Date: Oriental (MM/DD DAY HH:MM), and Western (DAY DD MON HH:MM)

There are also two option formats for the Time: 12 Hour and 24 Hour.

The character format can be either Upper Case or Lower Case.

PGM Message

Menu Page - Microsoft Internet Explorer

EASY SET

Programmed Message

1. Assign Feature

<input checked="" type="radio"/> Cancel Message	<input type="radio"/> GIVE ME THE CALL	<input type="radio"/> TAKE A MESSAGE
<input type="radio"/> ASK THEM TO HOLD	<input type="radio"/> SEND TO MY VM	<input type="radio"/> TRSF TO MY SEC
<input type="radio"/> LEAVE A MESSAGE	<input type="radio"/> PAGE ME	<input type="radio"/> OUT OF TOWN
<input type="radio"/> IN A MEETING	<input type="radio"/> I WILL CALL BACK	<input type="radio"/> Blank Message
<input type="radio"/> Blank Message	<input type="radio"/> Blank Message	<input type="radio"/> Blank Message
<input type="radio"/> Blank Message		

You can change these messages.

<input type="radio"/> Blank Message	<input type="radio"/> Blank Message
<input type="radio"/> Blank Message	<input type="radio"/> Blank Message
<input type="radio"/> Blank Message	

◀ First Prev Next Last ▶

This allows you to set or cancel a programmed message.

Programmed messages can be used to advise of your status to internal callers to your station. The programmed message will appear on their telephones LCD.

Up to 15-programmed messages are available system wide and 5 personal messages can be programmed. Each message can be a maximum of 16 characters.

Alarm Reminder

	Alarm	Hour	Min	Message
Alarm1	NotSet			
Alarm2	Today			
Alarm3	Daily			

Set Cancel Close

First Prev Next Last

2. Description

This allows user to set or change the alarm clock/appointment reminder feature.

Alarm has three types: NotSet, Today, Daily

This allows you to set or change the alarm clock/appointment reminder feature. Up to 3 different alarms are available.

Each alarm can have a message of up to 16 characters. The alarm message is displayed on the Keyset LCD when an alarm rings.

There are three Alarm settings: NotSet, Today, and Daily.

Send MSG

Message Inbox Outbox Depository

1. Send Message

Tel No		Add
Recipients		Del
Message		

Send

2. Description

This allows you to leave a message to the other keyphone user.

The number of new message is displayed on LCD of the phone.

Please insert ',' or ';' digit between telephone numbers to list several numbers all at once.

This allows you to send a message to another station user. The maximum length of a message is 80-characters.

There are four menus in the [Send MSG] menu: Message, Inbox, Outbox, and Depository.

Message

Select the [Send MSG] menu from the main page. After inputting the internal station number and message, click the [Send] button. If the INFDSP key of the received phone is set to 'ON', the latest receive message will be displayed on the LCD of the phone.

You can assign an INFDSP key to the key extender by clicking the extend button in EasySet. The assigned INFDSP key is a toggle button.

Inbox



Select [Send MSG]→[Inbox] from the main page, then the <Inbox> window will be displayed.

You can see up to twenty received messages in the Inbox.

To delete messages, check the relevant message boxes and click the [Delete] button.

To save a message in the Depository, click the [Dep] button corresponding to the message.

Outbox



Select [Send MSG]→[Outbox] from the main page.

You can see up to ten sent messages in the Outbox.

To delete messages, click on the relevant message box and then click the [Delete] button.

To keep a message in the Depository, click the [Dep] button corresponding to the message.

To cancel a sent message, click the corresponding [Off] button of the message.

Depository (Saved MSG)



From the main page, select [Send MSG]→[Depository].

You can view up to ten saved messages in the Depository.

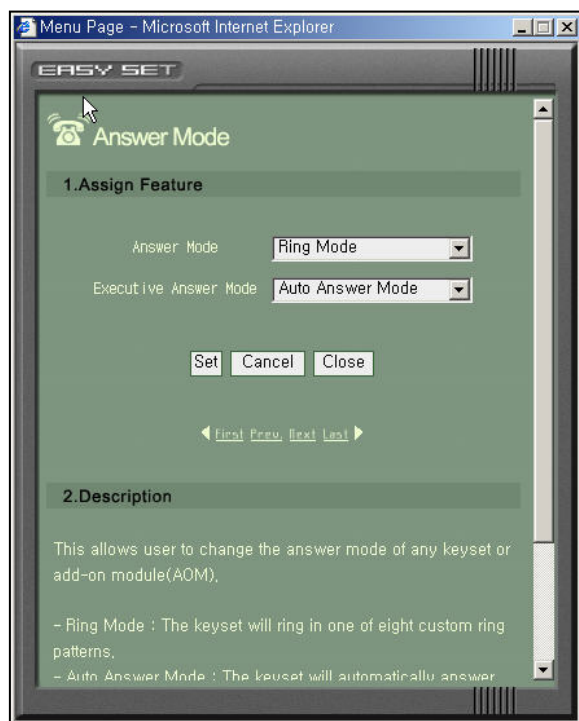
To delete messages, click on the relevant message box and then click the [Delete] button.

To add a message to the Depository, input the message and click the [Add] button.

To modify a message, edit the message and click the corresponding [Mod] button.

To send a saved message to someone, click the corresponding [Msg] button.

Answer Mode



This allows you to change the answer mode for intercom calls to your station.

Set to one of the following options:

Ring Mode: The keyset will ring in one of eight custom ring patterns. Calls are answered by pressing the ANS/RLS key or by lifting the handset.

Auto Answer Mode: After giving a short attention tone, the keyset will automatically answer calls on the speakerphone. When a C.O. line is transferred to a keyset in Auto Answer, the screened portion of the call will be Auto Answer, but the keyset or AOM will ring when the transfer is complete if the user has not pressed the ANS/RLS key or lifted the handset.

Voice Announce Mode: The Keyset will not ring. After a short attention tone, callers can make an announcement but the ANS/RLS key or handset must be used to answer calls.

Station On/Off



This allows you to set any of the following station features:

- Auto Hold
- Auto Timer
- Headset Use
- Hot Keypad
- Key Touch Tone
- Page Rejoin
- Ringing Preference
- Auto Camp-On
- AME Password
- Display Speed Name
- CID Review All
- Secure OHVA
- Auto Answer Trunk
- Enblock 2LCD

Assign Feature	Description
AUTO HOLD	Automatically places an existing external call on hold if a CALL button, trunk key or trunk route key is pressed during that call.
AUTO TIMER	Automatically starts the stopwatch timer during an external call.
HEADSET USE	When on, this feature disables the hook switch, allowing a headset user to answer all calls by pressing the ANS/RLS button.
HOT KEYPAD	When on, this feature allows the user to dial numbers without having to first lift the handset or press the SPK button.
KEY TOUCH TONE	Allows you to hear a tone when pressing buttons on your station.
PAGE REJOIN	Allows you to hear the latter part of page announcements if you become free during a page.
RINGING PREFERENCE	When off, you must press the fast flashing button, after lifting the handset, to answer a ringing call.
AUTO CAMPON	When on, allows you to automatically camp on to busy stations by remaining off-hook, without needing to press a CAMP-ON key.

Assign Feature	Description
AME PASSWORD	If this option is set to YES, you must enter your station password to set the Answer Machine Emulation on your station.
DISPLAY SPEED NAME	When on, the speed dial name associated with a speed dial number is displayed on your station's LCD display when using the speed dial. Available only on iDCS 500-L and OfficeServ 7000 Series.
CID REVIEW ALL	When on, saves information on all calls that ring at an extension. When OFF, saves information only on calls that were not answered at the extension or by the voice mail. Available only on iDCS 500 or OfficeServ 7000 Series systems.
SECURE OHVA	When on, an OHVA announcement from another station will only be heard when you are using the handset. When off, OHVA announcements will only be heard over the station speaker. Available only on the iDCS 500 and OfficeServ 7000 Series systems.
AUTO ANSWER TRUNK	Automatically answers an incoming external call.
ENBLOCK 2LCD	<i>For ITP Phones with 2 Line Display</i> Set to ON will require user to press SEND button to make a call, it works like a cell phone.

Volume



This allows you to set the volume and the ring tone heard at your station. You can use the Volume Up/Down buttons to vary the volume levels during a call.

From the main page, select the [Volume] menu. Then the <Station Volume> window will be displayed. After selecting the required volume of each assign feature, click the [Set] button.

You can adjust the station volume for the following assign features:

- Ring Volume
- Off Hook Ring Volume
- Handset RX Volume
- Speaker Phone Volume
- BGM Speaker Volume
- Page Speaker Volume
- Ring Frequency

Assign Feature	Description
RING VOLUME	This is the volume setting for the station ringer. There are eight volume levels: level 1 is the lowest and level 8 the highest.
OFF HOOK RING VOLUME	This is the volume of the alert tone that tells you there is a call camped on to your station. There are eight volume levels.
HANDSET RX VOLUME	This is the volume level received by you from the other party during conversations on the handset receiver. There are eight volume levels.
SPEAKER PHONE VOLUME	This is the volume level received by you from the other party during conversations on the station's speaker. There are 16 volume levels: level 1 is the lowest and level 16 the highest.
BGM SPEAKER VOLUME	This is the volume of the background music heard over the station speaker when your station is idle and BGM is turned on. There are 16 volume levels.
PAGE SPEAKER VOLUME	This is the volume you will hear when an internal page call is made over the station speaker when your station is idle and the PAGE is turned on. There are 16 volume levels.
RING FREQUENCY	This is the ring tone heard at your station to alert you to incoming calls.

Text Messaging



This allows you to set or change text messages for use during an OHVA call to your station.

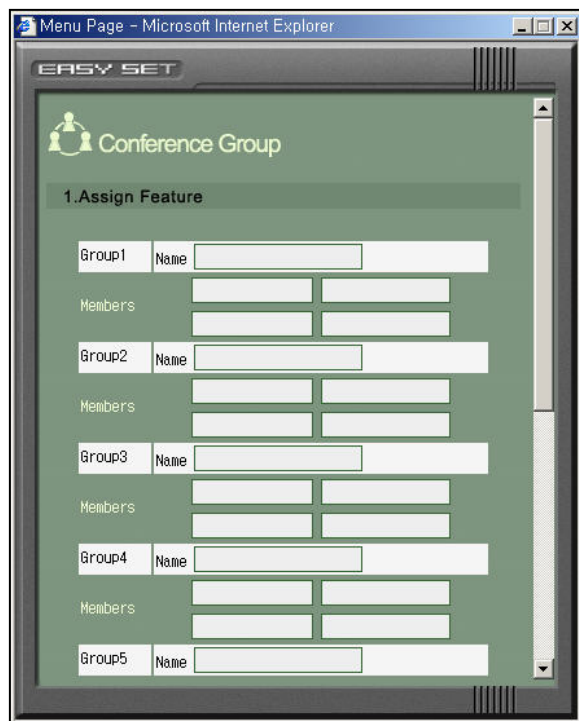
This feature must be enabled for you by the System Administrator.

The System Administrator can establish the internal stations in the 'MMC611 TEXT MSG STN'.

From the main page, select the [Text Msg] menu. After inputting a text message, click the [Set] button.

A maximum of 10 Text Messages are allowed per station. Each can be 16 characters long.

Conference Groups



This feature is only available for the ITP 5012L Keyset.

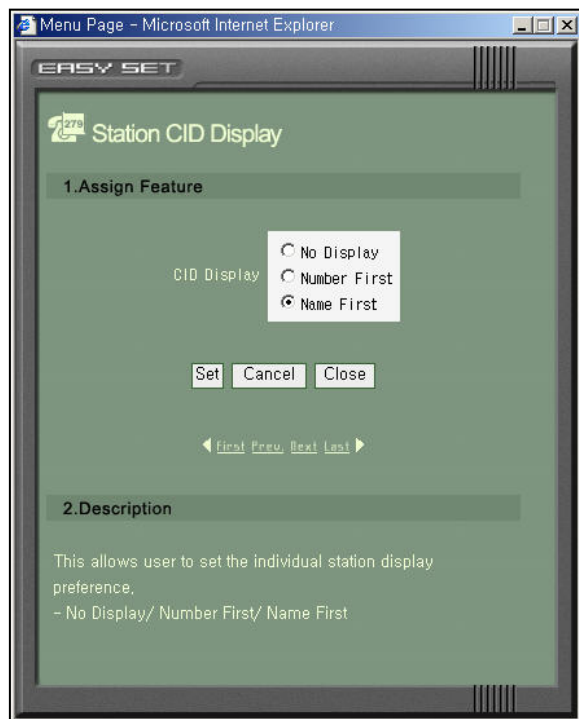
This allows you to set or change the conference group's assignments. Only users designated by your System Administrator can use this function. The System Administrator can establish the internal stations in the 'MMC612 GRP CONF STN'.

Once programmed, you can establish a conference call with the available members of the group automatically. Refer to your Station User guide for details on how to make the group conference call.

From the main page, select the [Conference] menu.

Each group can have an associated 11 character name and up to 4 members. You can have a maximum of 5 Conference Groups.

Caller ID



This allows you to set your preference for the way Caller ID is displayed on your station LCD.

From the main page, select the [Caller ID] menu. After selecting one of the CID Display radio button options, click the [Set] button.

Refer to your System Administrator to check whether the Caller ID is available on your system.

LCD Display



If your station has a large LCD, this function allows you to set or change the LCD screen type while in an idle state

From the main page, select the [LCD Display] menu. After selecting the idle screen type and DSS key display radio buttons, click the [Set] button.

Language



This allows you to assign the language used on your station's LCD display.

From the main page, select the [Language] menu. After selecting the required station language, click the [Set] button.

Exec State

If your station is designated a 'Boss' station this feature allows you to set or change your status or to set a reason for your absence.

Only a 'Boss' station user can program this function. The System Administrator can establish the internal stations in the MMC 303: Assign Executive/Secretary.

The status of each 'Boss' station is displayed in the Wallboard feature and is refreshed every minute.

From the main page, select the [Exec State] menu. After selecting one of the options, click the [Set] button.

Schedule

Title	Place	Time
<input type="checkbox"/> Conference	conf room	10:00
<input type="checkbox"/> Lunch	OK Rest.	12:00

This allows you to set or modify scheduled events. A scheduled alarm will ring at your station based on the time set in the OfficeServ EasySet Server.

Add/Delete Schedule

From the main page, select the [Schedule] menu. A maximum of 10 scheduled items can be programmed.

To add a schedule: Select a required date to add a schedule in and click the [Add] button.

To delete a schedule: Check the checkbox for the schedule to be deleted and click the [Delete] button.

To view a schedule: Select the required date and click the Schedule Title to view the details.

Edit a Schedule

Menu Page - Microsoft Internet Explorer

EASY SET

Schedule

2003/5/16(Fri)

S M T W T F S

1 2 3

4 5 6 7 8 9 10

11 12 13 14 15 16 17

18 19 20 21 22 23 24

25 26 27 28 29 30 31

List

Title Conference

Place conf room

Date 2003-05-16

Start 10:00

End 12:00

Content Conference for Easysat!!

Save

To edit a schedule select the required date and click the Schedule Title to view the details. After editing, click on the [Save] button.

Wallboard

Wallboard - Microsoft Internet Explorer

Remain Move Out

Show All Show Group

Group In Select All Cancel

Move Cellin Dion

Trip Teddy Bear

Room 4315

Out Tommy

Meet Ray

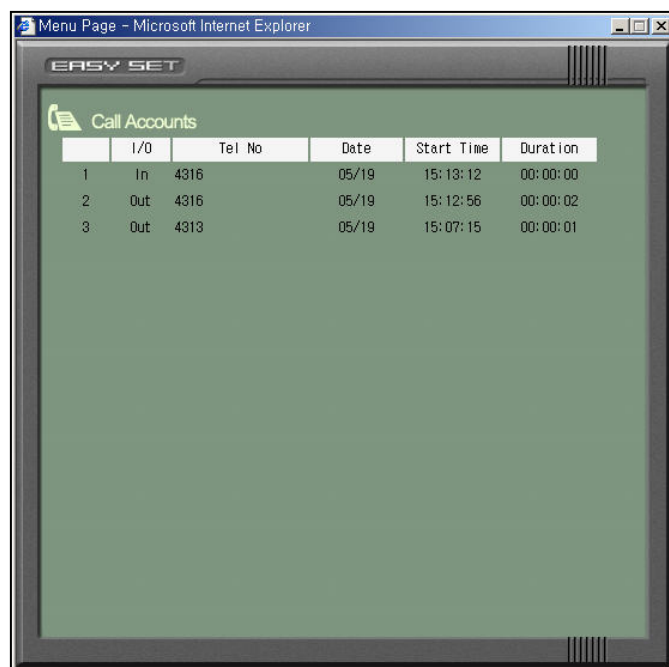
This allows you to view the status of the designated Boss stations. The function may not be programmed on your OfficeServ system. Please refer to your System Administrator.

From the main page, select the [Wallboard] menu.

You may also remove or include 'Boss' stations viewed with this feature. To remove a station from the viewed Boss group, click the [Show Group], then select the station you wish to remove and click on Group.

To return the station to the Boss group click [Show All], then select the station to be added and click on Group. This function is a view-only feature.

Call Accounts



	I/O	Tel No	Date	Start Time	Duration
1	In	4316	05/19	15:13:12	00:00:00
2	Out	4316	05/19	15:12:56	00:00:02
3	Out	4313	05/19	15:07:15	00:00:01

This allows you to view the details of your recent telephone calls, numbers, times, dates, durations, etc. Refer to your System Administrator to establish that this feature has been made available to you.

From the main page, select the [Call Accounts] menu.

It displays incoming calls with 'In' and outgoing calls with 'Out'.

User Key Assignment

This feature allows you to make changes to your user defined key associated to your Digital or IP Keyset. To program a user defined key click on the key to be programmed, a dialog box will appear. Choose the function you wish to assign.

With some functions an extender is required see the following table for details.

Assign Feature	Description	Extender
NONE	No assigned option	None
DP	Direct Pickup	Station or trunk Number
LNR	Redials the last number Dialed	None
SPD	Make a call with the speed number directly	00-49, 500-999
CHOICE	Currently not available	None
DS	Direct Station Select	Station Number
MSG	Enables you to leave a message indication at a keyset when the called party does not answer or you receive a busy signal	None
VMMSG	Connect to the voice mail system	None
CLIP	Show the caller ID during that call	None

Assign Feature	Description	Extender
FWRD	Forward incoming calls to forward destinations	0:Forward Cancel 1:All Call Forward 2:Busy Forward 3:No Answer Forward 4:Busy/NoAnswer Forward 5:Do Not Disturb Forward
NXT	Enables you to show the caller ID of calling party waiting for you during a call	None
CONF	Conference calls	None
IG	In/Out of Group	Station Group Number
PAGE	To make an announcement through the Keypad speakers	Zone number 0, 1, 2, 3 or 4
DND	Set or cancel Do Not Disturb state	None
INFDSP	Enable the OfficeServ News display on the LCD	None
SNR	Redial the saved number	None



Software License Agreement & Limited Warranty

For OfficeServ CTI Applications for iDCS and OfficeServ 7000 Keyphone Series

IMPORTANT, READ CAREFULLY

This Samsung End-User License Agreement (EULA) is a legal binding agreement between you (either an individual or an entity) and Samsung for Samsung software product identified above, which includes computer software and may include printed material, and "online" or electronic documentation ("SOFTWARE"). By installing, using the SOFTWARE, you indicate your acceptance of this Samsung License Agreement. If you do not agree to the terms of this License Agreement, please do not install or use the enclosed SOFTWARE.

SOFTWARE LICENSE

The SOFTWARE is protected by copyright laws and international copyright treaties, as well as other intellectual property laws and treaties.

1. GRANT OF LICENSE. This License Agreement grants you following rights:

- a. SOFTWARE: Samsung grants to you a personal, non-exclusive license to make and use one (1) copy of the SOFTWARE accompanying this Agreement on any single computer, provided the SOFTWARE is in use on only one computer at any time. If you have multiple Licenses for the SOFTWARE, then at any time you may have as many copies of the SOFTWARE in use as you have Licenses.
- b. Electronic Documents: Solely with respect to electronic documents included with the SOFTWARE, you may make an unlimited number of the copies, provided that such copies shall be used only for internal purpose and you shall not publish or distribute such to any third party, without Samsung Electronics Co., LTD. written and expressed consent.
- c. Limitation on Reverse Engineering, Decompilation, Disassembly: You shall not reverse engineer, decompile or disassemble the SOFTWARE, except to the extent that this restriction is expressly prohibited applicable law.
- d. Separation of Components: The SOFTWARE is licensed as a single product. Its component parts may not be separated for use on more than one computer.
- e. Rental: You may not rent, lease and/or lend the licensed SOFTWARE.
- f. Support Services: Samsung may provide you with support services related to the SOFTWARE, according to Samsung policies and programs and in for the country in which the SOFTWARE was purchased. With respect to technical information you provide to Samsung as part of the support services, Samsung may use such information for its business purpose, including for product support and development. Samsung will not utilize such technical information in a form that personally identifies you.
- g. SOFTWARE Transfer: You may permanently transfer all of your rights according to this agreement, provided you retain no copies, you transfer all of the SOFTWARE, and the recipient agrees to the terms of this agreement by notifying in writing to authorized Samsung VAR, outfit and/or dealer in which the SOFTWARE was purchased. And including all prior versions of SOFTWARE, if the SOFTWARE is an upgrade.
- h. Termination: Without prejudice to any other rights, Samsung may terminate this agreement if you fail to comply with the terms and condition of this agreement. In such event, you must destroy all copies of the SOFTWARE and all of its component parts.

2. SOFTWARE ACTIVATION

Software Activation; Samsung will provide a software activation code that will allow use of the purchased OfficeServ CTI products. The activation code will be associated with the MAC address of the LAN interface of the Samsung telephone system. In the event of hardware failure associated with the LAN interface Samsung will issue a replacement software activation code when requested by a Samsung authorized dealer. In the event that a replacement software activation code is issued the defective hardware associated with the original software activation code must be returned to Samsung. If the hardware associated to the software activation code is not returned to Samsung by the dealer the dealer will be billed for the original purchase price of the OfficeServ CTI application.

3. UPGRADES & COPYRIGHT

- a. Upgrade: If the SOFTWARE is an upgrade of a component of a package of software programs that you licensed as a single product, the SOFTWARE may be used and transferred only as an part of that single product package and may not be separated for use on more than one computer.
- b. Copyright: The SOFTWARE is owned by Samsung or its suppliers and protected by copyright laws and international treaty provisions. Therefore, you must treat the SOFTWARE like any other copyrighted material except that you may install the SOFTWARE on a single computer provided you keep the original solely for backup or archival purpose. You may not copy the printed materials accompanying the SOFTWARE.

LIMITED WARRANTY

Samsung warrants that (a) the SOFTWARE will perform substantially in accordance with the accompanying written materials for a period of ninety (90) days from the date of receipt, and (b) any Samsung supplied hardware accompanying the SOFTWARE will be free from defects in materials and workmanship under normal use and service for a period of one(1) year from the date of receipt. During the warranty periods specified above, Samsung will replace or repair any software or hardware found to be defective. Warranty claims should be made through the Samsung dealer from whom the products were purchased, and must be made within the applicable warranty period.

NO OTHER WARRANTIES

TO THE MAXIMUM EXTENT PERMITTED BY THE APPLICABLE LAW, SAMSUNG DISCLAIMS ALL OTHER WARRANTIES, EITHER EXPRESS OR IMPLIED, INCLUDING BUT NOT LIMITED TO IMPLIED WARRANTIES OF MERCHANTABILITY AND FITNESS FOR PARTICULAR PURPOSE, WITH RESPECT TO THE SOFTWARE, THE ACCOMPANYING PRODUCT MANUAL(S) AND WRITTEN MATERIALS, AND ANY ACCOMPANYING HARDWARE.

NO LIABILITY FOR DAMAGES

TO THE MAXIMUM EXTENT PERMITTED BY APPLICABLE LAW, IN NO EVENT SHALL SAMSUNG OR ITS SUPPLIERS BE LIABLE FOR ANY DAMAGES WHATSOEVER (INCLUDING, WITHOUT LIMITATION, DAMAGES FOR LOSS OF BUSINESS PROFITS, BUSINESS INTERRUPTION, LOSS OF BUSINESS INFORMATION, OR ANY OTHER PECUNIARY LOSS) ARISING OUT OF THE USE OF OR INABILITY TO USE THE SOFTWARE PRODUCT, EVEN IF SAMSUNG HAS BEEN ADVISED OF THE POSSIBILITY OF SUCH DAMAGES.

Samsung Telecommunications America, L.P.